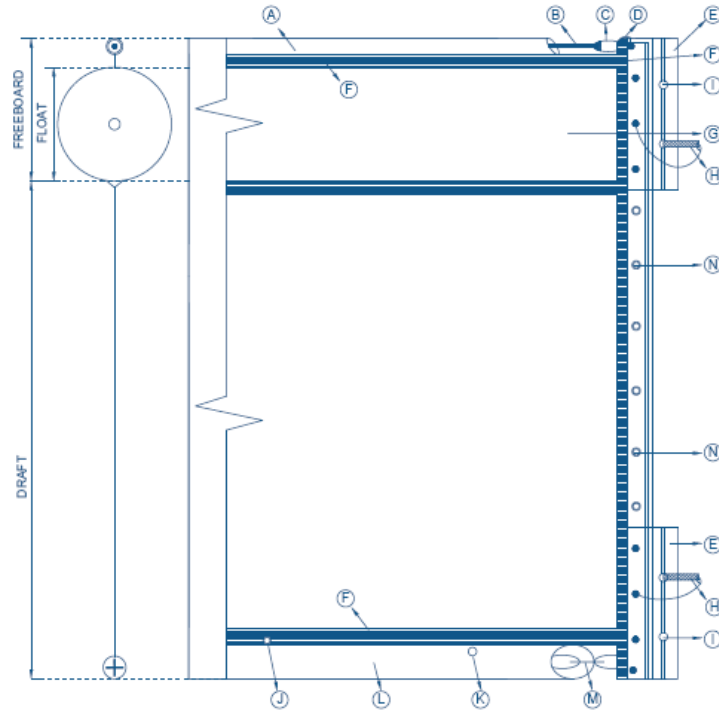


Texas Boom Company Specifications – Standard Type II Turbidity Curtain



Standard Type II Turbidity Curtain
Diagram Illustrative Only – Not to Scale
Free board: 6 inches or greater
Draft: 36 – 600 inches
Section length: 100 feet
Segment per 100' section: 26
Fabric: 18 Oz per Sq Yd Vinyl Coated Polyester PVC
Color: International Orange
Skirt: Permeable Option Available
Floatation logs: Rolled closed cell polyethylene foam
Top tension member: 5/16" HDG steel cable
Ballast and bottom tension: 5/16" HDG steel chain
End connectors: ASTM F962-94 universal "Z" aluminum connectors on top and bottom. Lacing grommets on reinforced seams between connectors. Rope, strong zip ties, and nuts and bolts can be used to connect grommets.
Water holes: 26
Anchor points: 3
Section length options: 50 ft / 100 ft

Boom Configuration
A: Top Tension Pocket
B: Top Tension Cable
C: Cable eye with thimble
D: Shackle
E: ASTM End Connectors
F: One inch RF welds
G: Foam Log
H: Toggle Pin
I: Toggle Pin hole
J: Anchor Point
K: Air and water drainage hole
L: Chain Pocket
M: Ballast Chain
N: Grommets



Texas Boom Company
 16600 Park Row Drive
 Houston, TX 77084
 (281) 441-2002
 sales@texasboom.com