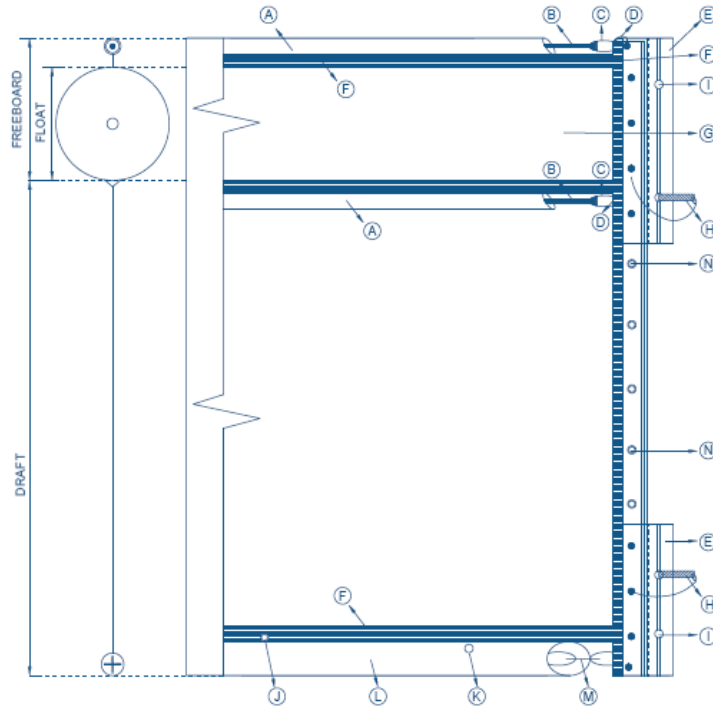


Texas Boom Company Specifications – Heavy Duty Type III Turbidity Curtain



| Heavy Duty Type III Turbidity Curtain |
|---|
| Diagram Illustrative Only – Not to Scale |
| Free board: 10 inches or greater |
| Draft: 36 – 600 inches |
| Section length: 100 feet |
| Segment per 100' section: 26 |
| Fabric: 22 Oz per Sq Yd Vinyl Coated Polyester PVC or heavier |
| Color: International Orange |
| Skirt: Permeable Option Available |
| Floatation logs: Rolled closed cell polyethylene foam |
| Top tension member: Dual 5/16" HDG steel cables |
| Ballast and bottom tension: 3/8" HDG steel chain |
| End connectors: ASTM F962-94 universal "Z" aluminum connectors on top and bottom. Lacing grommets on reinforced seams between connectors. Rope, strong zip ties, and nuts and bolts can be used to connect grommets. |
| Water holes: 26 |
| Anchor points: 3 |
| Section length options: 50 ft / 100 ft |

| Boom Configuration |
|---------------------------------------|
| A: Top Tension Pocket |
| B: Top Tension Cable |
| C: Cable eye with thimble |
| D: Shackle |
| E: ASTM End Connectors |
| F: One inch RF welds |
| G: Foam Log |
| H: Toggle Pin |
| I: Toggle Pin hole |
| J: Anchor Point |
| K: Air and water drainage hole |
| L: Chain Pocket |
| M: Ballast Chain |
| N: Grommets |



Texas Boom Company
 16600 Park Row Drive
 Houston, TX 77084
 (281) 441-2002
 sales@texasboom.com