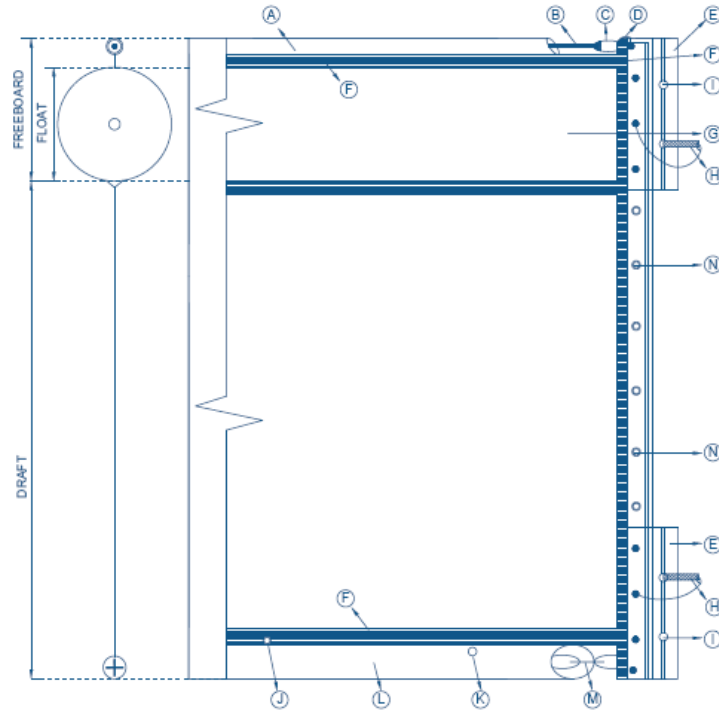


# Texas Boom Company Specifications – Heavy Duty Type II Turbidity Curtain



Heavy Duty Type II Turbidity Curtain
<b>Diagram Illustrative Only – Not to Scale</b>
<b>Free board:</b> 8 inches or greater
<b>Draft:</b> 36 – 600 inches
<b>Section length:</b> 100 feet
<b>Segment per 100' section:</b> 26
<b>Fabric:</b> 22 Oz per Sq Yd Vinyl Coated Polyester PVC
<b>Color:</b> International Orange
<b>Skirt:</b> Permeable Option Available
<b>Floatation logs:</b> Rolled closed cell polyethylene foam
<b>Top tension member:</b> 5/16" HDG steel cable
<b>Ballast and bottom tension:</b> 5/16" HDG steel chain
<b>End connectors:</b> ASTM F962-94 universal "Z" aluminum connectors on top and bottom. Lacing grommets on reinforced seams between connectors. Rope, strong zip ties, and nuts and bolts can be used to connect grommets.
<b>Water holes:</b> 26
<b>Anchor points:</b> 3
<b>Section length options:</b> 50 ft / 100 ft

Boom Configuration
<b>A:</b> Top Tension Pocket
<b>B:</b> Top Tension Cable
<b>C:</b> Cable eye with thimble
<b>D:</b> Shackle
<b>E:</b> ASTM End Connectors
<b>F:</b> One inch RF welds
<b>G:</b> Foam Log
<b>H:</b> Toggle Pin
<b>I:</b> Toggle Pin hole
<b>J:</b> Anchor Point
<b>K:</b> Air and water drainage hole
<b>L:</b> Chain Pocket
<b>M:</b> Ballast Chain
<b>N:</b> Grommets



Texas Boom Company  
 16600 Park Row Drive  
 Houston, TX 77084  
 (281) 441-2002  
 sales@texasboom.com